



How are BSH Guidelines produced and how should they be used?

Dr Sue Robinson
Consultant Haematologist
Guy's and St Thomas' NHS Foundation
Trust



BSH changes

- Re-organisation

Moving on

A five-year organisational strategy
for the British Society for Haematology

Prepared by
Linda Laurance & Associates

March 2016



Key strategic aims

Make BSH membership a must for haematology consultants, trainees, nurses and biomedical scientists, and strengthen membership engagement in all the Society's activities.

Maintain and build on areas where the Society has already gained a reputation for excellence: guidelines and education.

Transform the Annual Scientific Meeting into *the* go-to event for all UK haematology professionals.

Strengthen the voice of haematology at national and international levels.

Make sure the Society is fit for purpose in terms of sustainability and resource management.

Website


The haematology hub for
all healthcare
professionals

News

-  **Novel lymphoma therapy in development**
⌚ 5 hours ago
-  **Final call for abstracts - ASM Crucible session**
⌚ 2 days ago
-  **Timing critical in antifibrinolytic treatment for acute severe haemorrhage**
⌚ 2 days ago

> [more news](#)

Guidelines

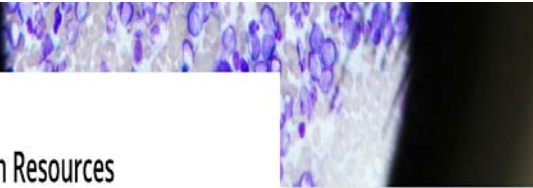
-  **Guidelines**
Read the latest BSH Guidelines
⌚

> [view guidelines](#)

Bringing haematology professionals together since 1960 to transform the care we provide to patients.



Education and Grants




HOME EDUCATION BSH EDUCATION RESOURCES

BSH Education Resources


In this section we have collated haematological educational resources to support your professional development. Whether you are an undergraduate, a junior doctor, a specialist trainee, a nurse, allied health professional or a healthcare scientist - there will be something here to suit you.

These resources are open to non-members, but you will need to create a profile on our website. If you haven't registered on our site, you can [create your profile](#), or you can [login now](#).


Visit your [MyBSH](#) page to follow your progress through our materials.




Case Reports




Multiple Choice Questions



Essay Questions



Tutorials




Extended Matching Questions

If you would like to submit a Case Report or Haematology image for publication on our website, please visit our [submitter](#) page.

Search

- BSH Education Resources
- Case Reports
- Multiple Choice Questions
- Essay Questions
- Tutorials
- Extended Matching Questions
- Haematology Images
- Lectures and videos
- Beyond the BSH
- Students
- Submit content for publication

[t](#) [f](#) [in](#)



Grants

Apply for grants to attend the BSH Annual Scientific Meeting or to attend international meetings. We also give funds for fellowships and support short-term study.

See all our grants

Events

Select Venue



Event Type



Select from Date

Select to Date

Filter

BSH Events

January 18

February 18



25

28



BSH Event

January 25th 2018

PAEDIATRIC HAEMATOLOGY STUDY DAY

This one-day course is available to all haematology trainees, specialty doctors as well as general paediatricians.

Location: Royal College of General Practitioners

[Details](#)



BSH Event

February 28th 2018

TRANSFUSION IN PRACTICE, BIRMINGHAM

Practical, interactive teaching designed to improve transfusion practice for the non-specialist.

Location: Postgraduate Centre Birmingham

[Details](#)



BSH Event

March 26th 2018

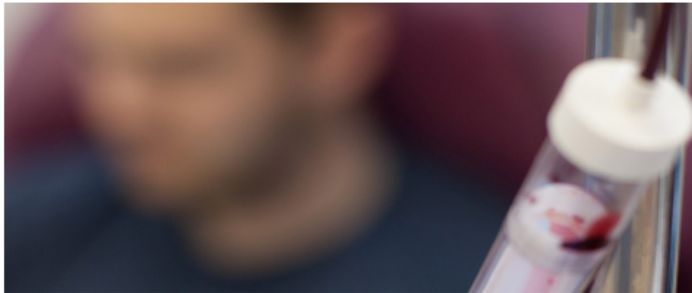
TRANSFUSION IN PRACTICE, BIRMINGHAM

Practical, interactive teaching designed to improve transfusion practice for the non-specialist.

Location: Postgraduate Centre Birmingham

[Details](#)

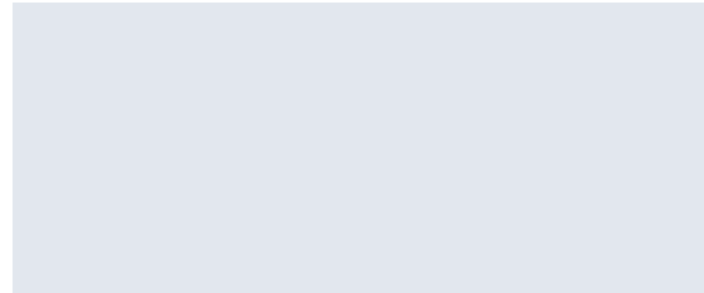
News



Novel lymphoma therapy in development

Scientists are working on a new way of eliminating abnormal T-cells in T-cell lymphoma. Professor Andrew Sewell and colleagues at Cardiff University, UK, searched for a new method of targeting cancerous cells without destroying h...

🕒 6 hours ago



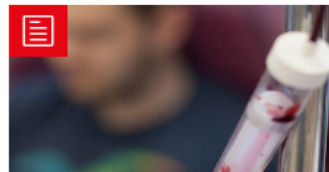
Final call for abstracts - ASM Crucible session

The deadline for abstract submissions for the Crucible session at the BSH Annual Scientific Meeting 2018 is Thursday 30 November 2017. All doctors in training are eligible to submit up to 300 words on the theme 'How do haematolo...

🕒 2 days ago



Timing critical in antifibrinolytic treatment for acute severe haemorrhage



£4m for stem cell transplant trials

🕒 7 days ago



Apply for the 2018 Healthcare Science Awards

🕒 7 days ago



NHS Blood and Transplant partner with MOBO Awards to launch B Positive Choir

🕒 7 days ago

British Journal Haematology

HOME BRITISH JOURNAL OF HAEMATOLOGY

British Journal of Haematology



The Official Journal of the British Society for Haematology, The British Journal of Haematology (BJH) is a peer-reviewed medical journal that has been in publication since 1955. The Journal publishes original research papers in clinical, laboratory and experimental haematology, helping clinicians and staff in the field keep up to date with the latest recommendations, developments, and protocols.

All our full, trainee and developing world members receive copies of the BJH along with [access to the journal online](#).

BSH members - remember to [sign in to](#) the BSH website to access the journal.

Visit the [Wiley Online Library](#)



British Journal of Haematology

Wiley online library



© Copyright 2017 The British Society for Haematology. All rights reserved

The British Society for Haematology is registered in England and Wales as a Company Limited by Guarantee, No 2645706 and as a Charity, No 1005735 Registered Office and correspondence address: 100 White Lion Street London N1 9PF. Phone: 020 7713 0990



Guidelines

Filter Guidelines

Show guidelines only Show addenda only

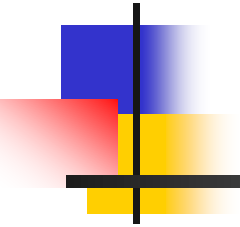
Search

Switch between grid and list views

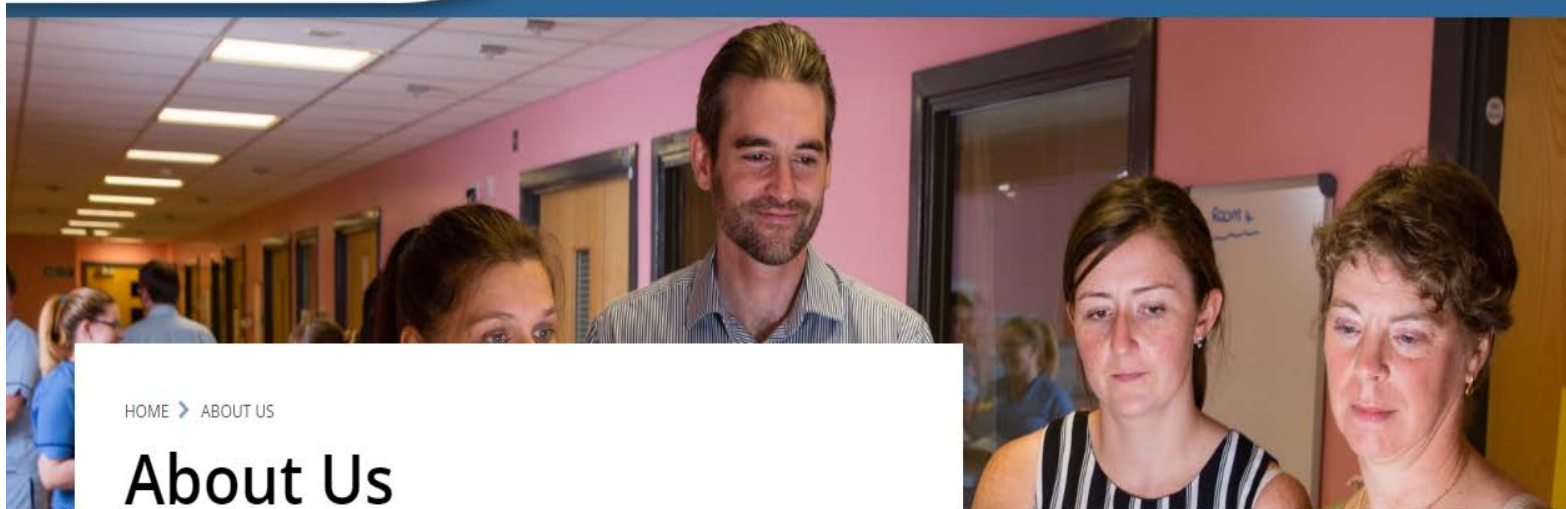
Type	Category	Date From	Date To
Type	Transfusion	From Date	To Date

Guideline	Guideline	Guideline
<p>Transfusion</p> <p>Use of Platelet Transfusions</p> <p>Issued: 23/12/2016</p> <p>Further details</p>	<p>Transfusion General Haematology</p> <p>Red Cell Transfusion in Sickle Cell Disease Part II</p> <p>Issued: 18/11/2016</p> <p>Further details</p>	<p>Transfusion General Haematology</p> <p>Red Cell Transfusion in Sickle Cell Disease Part I</p> <p>Issued: 07/11/2016</p> <p>Further details</p>
<p>Transfusion</p> <p>Transfusion for Fetuses, Neonates and Older Children</p> <p>Issued: 15/04/2016</p> <p>Further details</p>	<p>Transfusion</p> <p>Blood Grouping and Antibody Testing in Pregnancy</p> <p>Issued: 14/03/2016</p> <p>Further details</p>	<p>Transfusion</p> <p>Identification and Management of Pre-Operative Anaemia</p> <p>Issued: 06/09/2015</p> <p>Further details</p>

BSH Guidelines revised process



Renamed from BCSH to BSH Guidelines



HOME > ABOUT US

About Us

The British Society for Haematology (BSH) has been bringing haematology professionals together since 1960 to transform the care we provide to patients. With over 1700 members worldwide, we are the largest UK organisation concerned with haematology and the only society to cover all aspects of the specialty.

Listening

Our members work together to share ideas and knowledge, and to champion and strengthen haematology practice.

Learning

Together we help shape the future of haematology by providing access to resources, events and education that support your professional development.

Leading

Bridging the gap between research and practice, our guidelines raise the standards of clinical and

Search



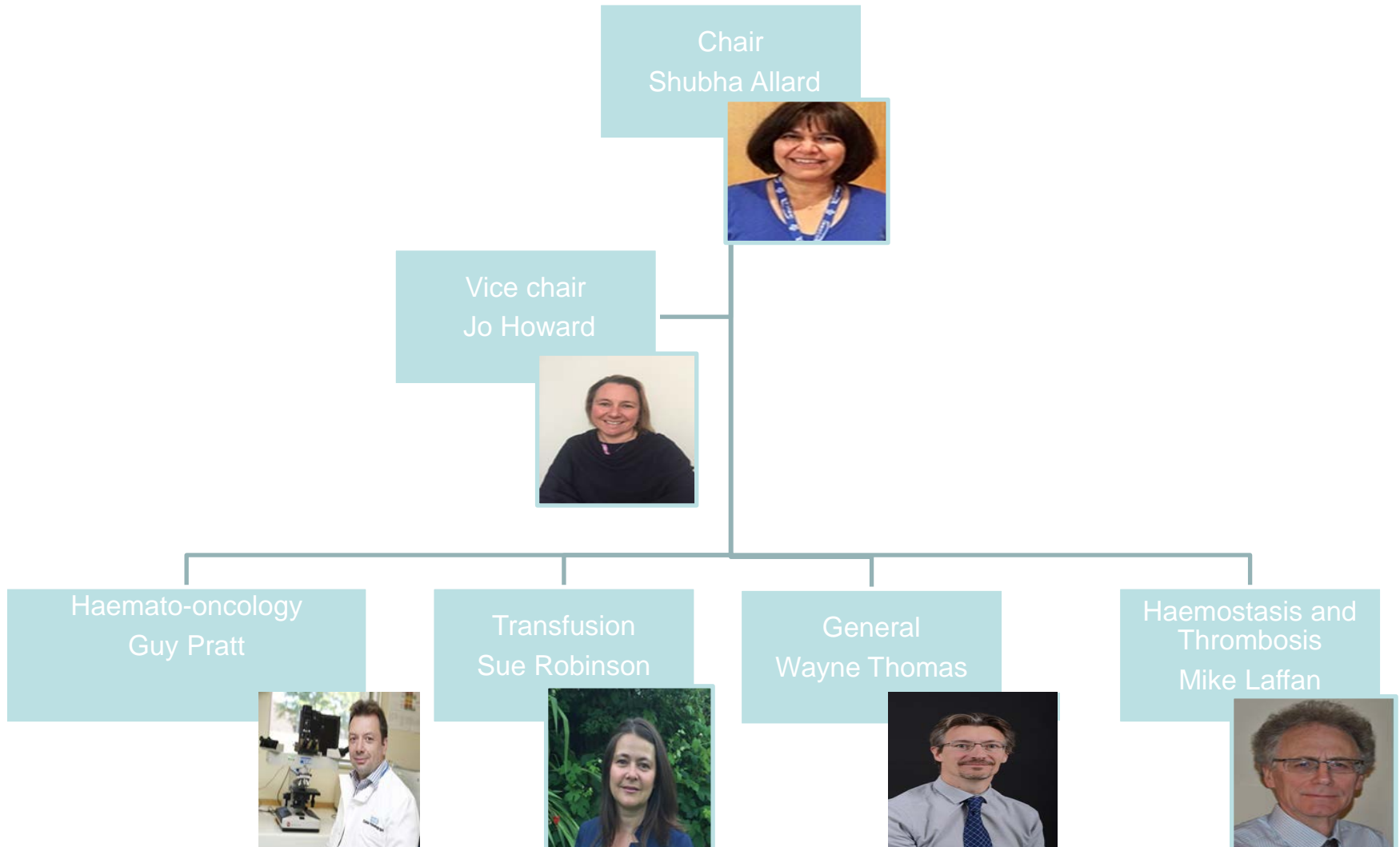
About Us

Board of Trustees

Committees

Team Members

BSH Guideline Committee & Task Forces



Transfusion Task Force



BSH Guidelines
New Task Force Members Induction

British Society for
Haematology
Listening • Learning • Leading

Task Force Members Job Descriptions

Task Force members should be familiar with the procedure for guidelines commissioned by the BSH as shown on the BSH website. The members need to fulfill their roles as described in that process and in addition have specific responsibilities as described below:

- To attend Task Force meetings and comment on draft guidelines.
- To review guidelines to ensure they remain current best practice.
- To lead or participate in Writing Groups. When doing so the purpose is to ensure that guidelines are developed in accordance with procedure for guidelines commissioned by BSH as shown on the BSH website.
- To participate in Task Force discussions on the commissioning, review and archiving of guidelines, both in general terms and specifically from the perspective of a member's clinical area, geographical location or the type of hospital or laboratory where the member works.

Search



Transfusion Task Force

General Haematology Task Force

Haemato - Oncology Task Force

Haemostasis and Thrombosis Task Force



6

© British Society for Haematology

email: bshguidelines@b-s-h.org.uk

Tel: 020 7713 2093





Three styles of guideline:

- **BSH Guideline**

- Evidence-based guideline developed following a professional literature search and a review of the evidence by the writing group

- **BSH Good Practice Paper**

- Used to recommend good practice in areas where there is a less robust evidence base
- degree of consensus or uniformity is likely to be beneficial to patient care

- **BSH Position Paper**

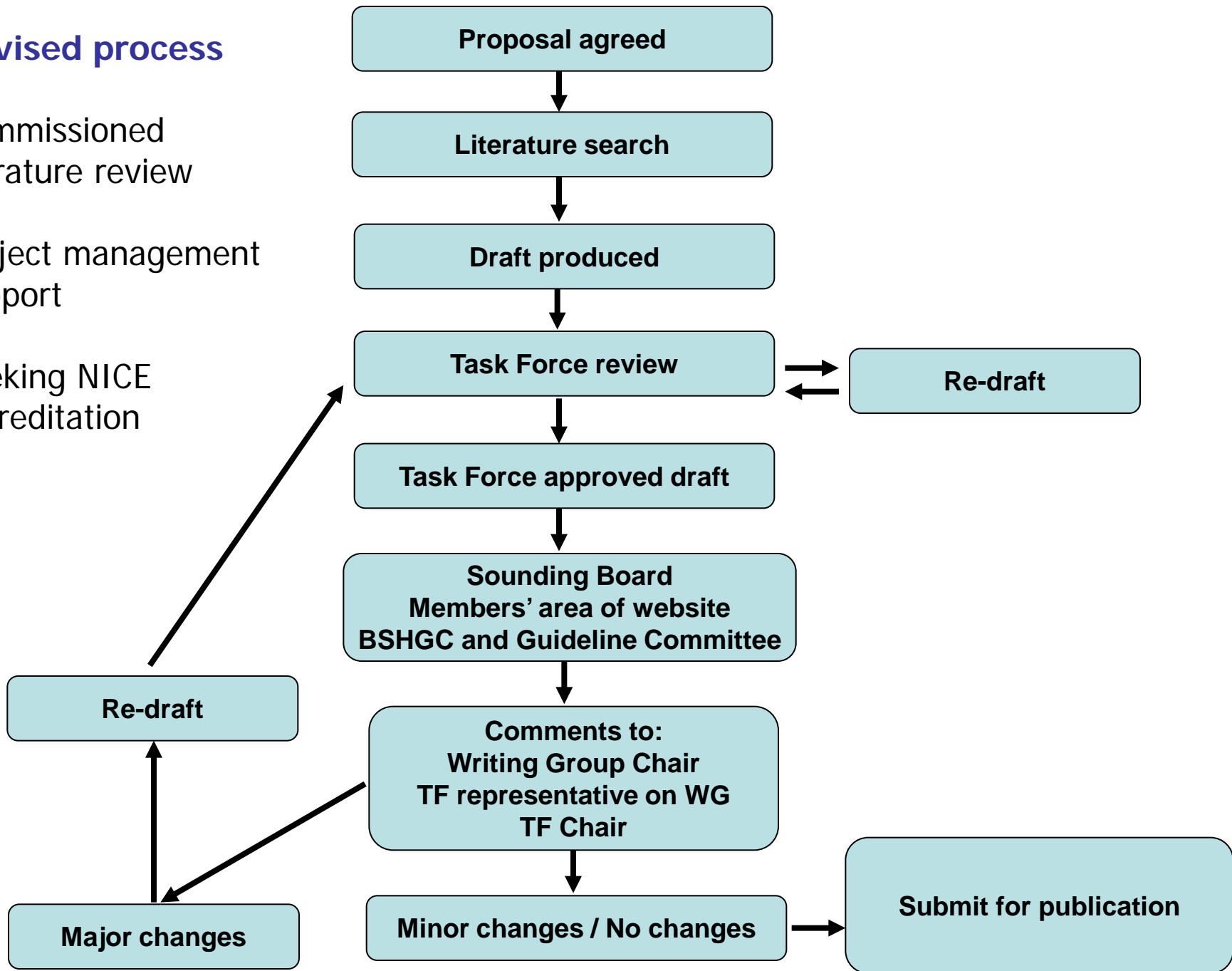
- Adoption and adaptation of a non-UK evidence-based guideline for use in the UK.

Revised process

Commissioned literature review

Project management support

Seeking NICE accreditation



Wiley Editing Services
Ensure your manuscript is ready for submission

Translation Service [Learn more](#)

WILEY

Advertisement

Distinguish yourself
Stand out from the crowd
Increase the discoverability of your work
Register for your ORCID iD today



ORCID

PDF

Info

References

Figures

Go to old article view


TRANSFUSION MEDICINE
Official Journal of the British Blood Transfusion Society



Explore this journal >

GUIDELINES

The administration of blood components: a British Society for Haematology Guideline

S. Robinson , A. Harris, S. Atkinson, C. Atterbury, P. Bolton-Maggs, C. Elliott, T. Hawkins, E. Hazra, C. Howell, H. New, T. Shackleton, K. Shreeve, C. Taylor

First published: 6 November 2017 [Full publication history](#)

DOI: 10.1111/tme.12481 [View/save citation](#)

Cited by (CrossRef): 0 articles [Check for updates](#) [Citation tools](#)

 scores

Early View



Browse Early View Articles
Online Version of Record
published before inclusion
in an issue

METHODOLOGY

This guideline was compiled according to the BSH process at <http://www.b-s-h.org.uk/guidelines/>. The Grading of Recommendations Assessment, Development and Evaluation (GRADE) nomenclature was used to evaluate the levels of evidence and to assess the strength of recommendations. The GRADE criteria can be found at <http://www.gradeworkinggroup.org>.

This guideline represents the minimum requirements for the safe administration of blood component transfusions. These are intended to provide the foundations for organisations to build on when developing their own local policies and guidelines. However, it should be recognised that the more complex the procedures are, the more open to error they become.


Literature review details

A  Text size Share

- METHODOLOGY
- BACKGROUND
- BLOOD COMPONENTS AND BLOOD PRODUCTS
- KEY PRINCIPLES OF SAFE BLOOD ADMINISTRATION
- TRAINING AND COMPETENCIES
- DECISION TO TRANSFUSE
- REQUESTS FOR BLOOD TRANSFUSION
- PRE-TRANSFUSION BLOOD SAMPLING
- COLLECTION AND DELIVERY OF BLOOD COMPONENTS TO THE CLINICAL AREA
- ADMINISTRATION OF BLOOD COMPONENTS
- MONITORING THE PATIENT
- COMPLETION OF THE TRANSFUSION EPISODE
- FURTHER EVIDENCE AND RESEARCH



Guidelines



HOME > GUIDELINES > GUIDELINES > TRANSFUSION FOR FETUSES, NEONATES AND OLDER CHILDREN


Transfusion for Fetuses, Neonates and Older Children

Appropriate transfusion of fetal and paediatric patients of all ages is vital in order to balance transfusion benefits against risks. These risks include transfusion of an incorrect blood component due to errors such as mistaken patient identity, or unpredictable acute transfusion reactions (Stainsby et al, 2008). Recent studies suggest that a significant percentage of paediatric transfusion recipients receive only one transfusion during their admission (Slonim et al, 2008; New et al, 2014), raising the possibility that some may be avoidable. Specialised components are available for transfusion to different paediatric patient groups and for different clinical indications.

Plasma components have been imported for all patients born on or after 1st Jan 1996 in order to reduce the risk of transfusion transmission of variant Creutzfeldt-Jakob disease (vCJD; see section 7). Additional component safety measures are applied for fetal and neonatal patients, who are particularly vulnerable recipients because of their small size and developmental immaturity and who also have the longest potential lifespan. The clinical section focuses largely on aspects relating to transfusion indications and administration, whereas the laboratory section contains most of the information relating to pre-transfusion testing and component selection.

Date: 15 April 2016

> [Go to full guideline](#)

 [Download audit template](#)

Search

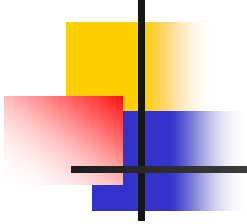




Guidelines on the horizon

- **Haemato-oncology**
 - Management of primary CNS lymphoma
 - Chronic Myeloid Leukaemia
- **Haemostasis and Thrombosis**
 - Thrombosis and haemostasis in paediatric malignancy
 - Use of TEG and TEM in clinical practice
- **General Haematology**
 - Hydroxycarbamide in children and adults with sickle cell disease
 - Diagnosis and management of polycythaemia
 - G6PD
- **Transfusion**
 - Updated irradiation guidelines
 - Transfusion and haemopoietic stem cell transplants

Joint BSH and BBTS Good Practice Papers





It's your turn

- How do you use the BSH Guidelines?
- How useful are they?
- How could they be improved?



Why get involved?

- Passionate about best care
- Quality, Leadership, Data
- Challenge and Variety
- Contribute and influence best transfusion practice
- Representation of peers from within the NHS
- Networking – building bridges, multidisciplinary, friendships



How can you get involved?

- Suggest a Topic
- Join a Writing group
- Join a Task Force
- Join the Sounding Board

Contact

Rita Gupta (Guidelines Project Manager)

bshguidelines@b-s-h.org.uk